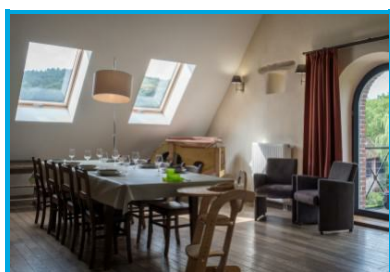




L'Étage à Gesves: a rural gîte in Le Moulin de L'Abbaye



Hélène Rase

Rue De L'abbaye 4

Faulx-les-tombes - 5340

Phone number (main contact): +32
485 18 57 15

<https://www.lemoulindelabbaye.info>

This countryside gîte, in Faulx-les-Tombes, is set in the former mill of the abbey. It can host up to 8 guests.

Recently beautifully renovated, it is located on the first floor.

Another #link[node4881]gîte for 2 persons], in the same building, can also be booked. They are independent from each other.

Description

- 4 double bedrooms with single beds
- 3 bathrooms (with either a shower or a bath)
- Equipped kitchen
- Dining room
- Living room with a pellet stove
- Garden with a terrace and a picnic table

Equipment for babies (cot...) is available on request.

In the area

- [The village of Mozet](#)
- [The village of Thon-Samson](#)
- [Samson cheese dairy](#)

The information contained herein is provided as a guide only.

We recommend that you check with the local supplier before you leave.

Website editor

Etienne CLAUDE, Wallonia Belgium Tourism Chief Executive Officer (WBT NPO).

© Wallonia Belgium Tourism (WBT asbl). Avenue Comte de Smet de Nayer 14 . 5000
Namur. Belgium + 32 (0)81 84 41 00 <https://visitwallonia.be>
info@walloniabelgiumtourism.co.uk

The information contained in this document is provided and has been compiled very carefully by Wallonia Belgium Tourism (WBT NPO). The editor cannot be held responsible for possible changes that could have occurred between the collection of data and their presence in this document.

Unless otherwise specified, the information you find in this document belongs to Wallonia Belgium Tourism (WBT NPO).

Any use or reproduction of the information require a prior written permission

Wallonia Belgium Tourism (WBT NPO) reserves all intellectual property rights in this document