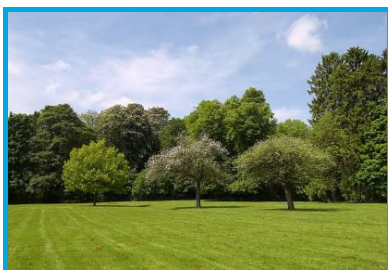




Nelson Mandela Park | Monceau-sur-Sambre



Gina Santin

Place Albert Ier

Monceau-sur-sambre - 6031

Phone number (main contact): +32

71 86 14 14

<https://www.cm-tourisme.be/>

This 67-hectare park, in Monceau-sur-Sambre (Hainaut), is well worth the detour. 28 didactic panels, along the path, give information about the various trees planted there.

History

- It originally was a French style garden
- Through time, it evolved to an English style park, with shaded paths, woodlands, flower beds...
- Now renamed Nelson Mandela Park, it is now beautifully landscaped and includes a pond, paths for runners and a fitness trail

The park is accessible to visitors with reduced mobility.

Guided tour

Nature guides are available for group visits. Please book with the
Maison du Tourisme du Pays de Charleroi.

The information contained herein is provided as a guide only.

We recommend that you check with the local supplier before you leave.

Website editor

Etienne CLAUDE, Wallonia Belgium Tourism Chief Executive Officer (WBT NPO).

© Wallonia Belgium Tourism (WBT asbl). Avenue Comte de Smet de Nayer 14 . 5000
Namur. Belgium + 32 (0)81 84 41 00 <https://visitwallonia.be>
info@walloniabelgiumtourism.co.uk

The information contained in this document is provided and has been compiled very
carefully by Wallonia Belgium Tourism (WBT NPO). The editor cannot be held
responsible for possible changes that could have occurred between the collection of
data and their presence in this document.

Unless otherwise specified, the information you find in this document belongs to
Wallonia Belgium Tourism (WBT NPO).

Any use or reproduction of the information require a prior written permission

Wallonia Belgium Tourism (WBT NPO) reserves all intellectual property rights in this
document