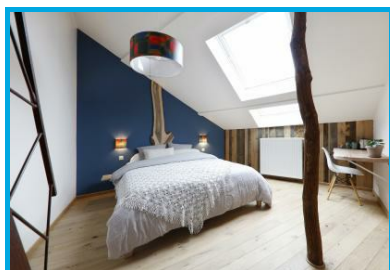




## Cochlea: a guesthouse in Marche-en-Famenne



[V]you - Virginie Willemet

Avenue De La Toison D'or 10  
Marche-en-famenne - 6900

Phone number (main contact): +32  
497 68 68 95

<https://www.cochlea-bnb.be>

**The Cochlea guesthouse, located at the heart of Marche-en-Famenne, features two eco-friendly bedrooms, on the third floor of a town mansion. Superb view of the town included!**

### Description

- The **Chambre des Bois** (2-4 persons): a spacious and comfy room
- The **Chambre des Jardins** (1-3 persons): a real cocoon

You will get to try a zero-waste bathroom, terroir delights with a breakfast featuring local and organic products, artisanal chocolates, a tasting of regional beers...

### In the area

- [The Famenne & Art Museum](#) in Marche-en-Famenne

- [The Lorette cave](#) in Rochefort, a spectacular nature gem
- [The spa du Quartier Latin](#) in Marche-en-Famenne

.....

The information contained herein is provided as a guide only.

We recommend that you check with the local supplier before you leave.

Website editor

Etienne CLAUDE, Wallonia Belgium Tourism Chief Executive Officer (WBT NPO).

© Wallonia Belgium Tourism (WBT asbl). Avenue Comte de Smet de Nayer 14 . 5000  
Namur. Belgium + 32 (0)81 84 41 00 <https://visitwallonia.be>  
[info@walloniabelgiumtourism.co.uk](mailto:info@walloniabelgiumtourism.co.uk)

The information contained in this document is is provided and has been compiled very carefully by Wallonia Belgium Tourism (WBT NPO). The editor cannot be held responsible for possible changes that could have occurred between the collection of data and their presence in this document.

Unless otherwise specified, the information you find in this document belongs to Wallonia Belgium Tourism (WBT NPO).

Any use or reproduction of the information require a prior written permission

Wallonia Belgium Tourism (WBT NPO) reserves all intellectual property rights in this document