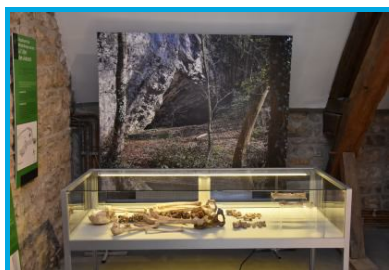




Musée archéologique de la Haute-Meuse | Godinne



MAHM

Rue Du Prieuré 1a
Godinne - 5530

Phone number (main contact): +32
493 43 30 92

<https://archo-godinne.museum/>

Nestled in a former farm (built in 1623 and a listed monument), the MAHM (Musée archéologique de la Haute-Meuse) is a museum on archaeology in Godinne. A fantastic opportunity to travel through time.

Dedicated to Prehistory and Antiquity, its collections feature a selection of tools, ornaments, bones, tombs from the region. The last room focuses on palaeontology and presents fossils discovered in the Haute Meuse.

Temporary exhibitions are regularly organised.

.....

The information contained herein is provided as a guide only.

We recommend that you check with the local supplier before you leave.

Website editor

Etienne CLAUDE, Wallonia Belgium Tourism Chief Executive Officer (WBT NPO).

© Wallonia Belgium Tourism (WBT asbl). Avenue Comte de Smet de Nayer 14 . 5000
Namur. Belgium + 32 (0)81 84 41 00 <https://visitwallonia.be>
info@walloniabelgiumtourism.co.uk

The information contained in this document is provided and has been compiled very carefully by Wallonia Belgium Tourism (WBT NPO). The editor cannot be held responsible for possible changes that could have occurred between the collection of data and their presence in this document.

Unless otherwise specified, the information you find in this document belongs to Wallonia Belgium Tourism (WBT NPO).

Any use or reproduction of the information require a prior written permission

Wallonia Belgium Tourism (WBT NPO) reserves all intellectual property rights in this document