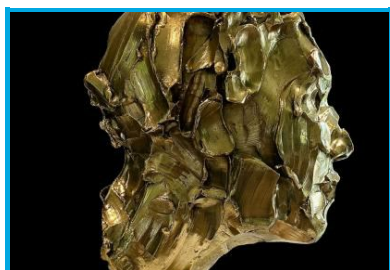




Catherine Thiry exhibition at the Domaine de la bataille de Waterloo



Catherine Thiry

Route Du Lion 1815

Braine-l'alleud - 1420

Phone number (main contact): +2
385 19 12

<https://www.waterloo1815.be/exposition-temporaire-catherine-thiry-effigies/>

The Domaine de la Bataille de Waterloo presents artist Catherine Thiry's clay sculptures as part of the 2022 Artists' Journey.

This Belgian artist models the earth as she applies large strokes of paint to the canvas, with conviction and sensitivity.

His majestic and monumental effigies in bronze hues, now adorning the Allée de la Garde du Memorial, move visitors by their intensity, their humanity.

A beautiful tribute to the disappeared from history and to living beings!

.....

The information contained herein is provided as a guide only.

We recommend that you check with the local supplier before you leave.

Website editor

Etienne CLAUDE, Wallonia Belgium Tourism Chief Executive Officer (WBT NPO).

© Wallonia Belgium Tourism (WBT asbl). Avenue Comte de Smet de Nayer 14 . 5000
Namur. Belgium + 32 (0)81 84 41 00 <https://visitwallonia.be>
info@walloniabelgiumtourism.co.uk

The information contained in this document is provided and has been compiled very carefully by Wallonia Belgium Tourism (WBT NPO). The editor cannot be held responsible for possible changes that could have occurred between the collection of data and their presence in this document.

Unless otherwise specified, the information you find in this document belongs to Wallonia Belgium Tourism (WBT NPO).

Any use or reproduction of the information require a prior written permission

Wallonia Belgium Tourism (WBT NPO) reserves all intellectual property rights in this document