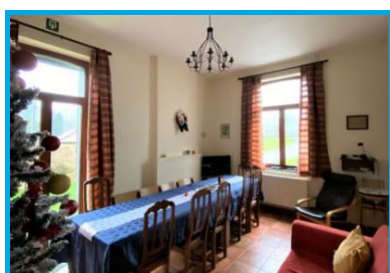




Gîtes Rausa – Le Logis: a rural gîte in Modave



Pierre-Yves Dequinze

Rue Rausa, 4

Modave - 4577

Phone number (main contact): +32

496 26 97 25

Located in the hamlet of Rausa, in Modave, Le Logis is nestled in the old village school, wonderfully atmospheric. The perfect location to relax and enjoy charming walks in the Condruzian countryside.

A family gîte near Modave

Ground floor

- 1 equipped kitchen
- 1 dining room

1st floor

- 3 bedrooms
- 1 bathroom
- 1 lounge

2nd floor

- 1 bedroom with 3 single beds

- 1 bathroom (shower)

2 other gîtes can be rented on site: [Le Fournil](#) and [La Classe](#).

What to do in Modave and the surrounding area?

Discover Huy and its surroundings, as well as the magnificent Modave castle.

- [Walking around Modave Castle](#)
- [Modave castle and its gardens](#)
- [A river cruise](#) in Huy
- [Le Clos des Prébendiers vineyard](#) in Huy

The information contained herein is provided as a guide only.

We recommend that you check with the local supplier before you leave.

Website editor

Etienne CLAUDE, Wallonia Belgium Tourism Chief Executive Officer (WBT NPO).

© Wallonia Belgium Tourism (WBT asbl). Avenue Comte de Smet de Nayer 14 . 5000 Namur. Belgium + 32 (0)81 84 41 00 <https://visitwallonia.be>
info@walloniabelgiumtourism.co.uk

The information contained in this document is provided and has been compiled very carefully by Wallonia Belgium Tourism (WBT NPO). The editor cannot be held responsible for possible changes that could have occurred between the collection of data and their presence in this document.

Unless otherwise specified, the information you find in this document belongs to Wallonia Belgium Tourism (WBT NPO).

Any use or reproduction of the information require a prior written permission

Wallonia Belgium Tourism (WBT NPO) reserves all intellectual property rights in this document